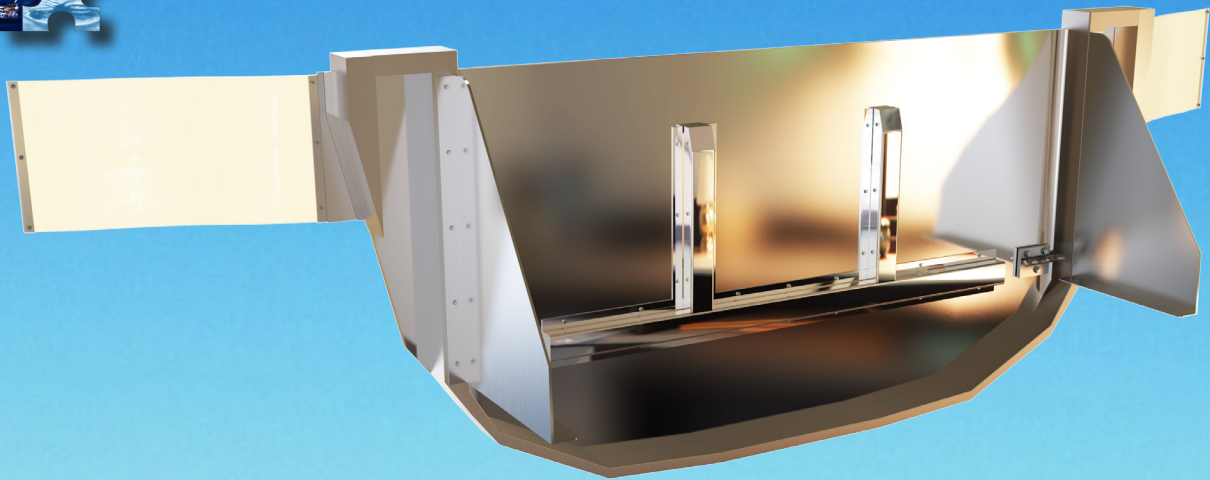
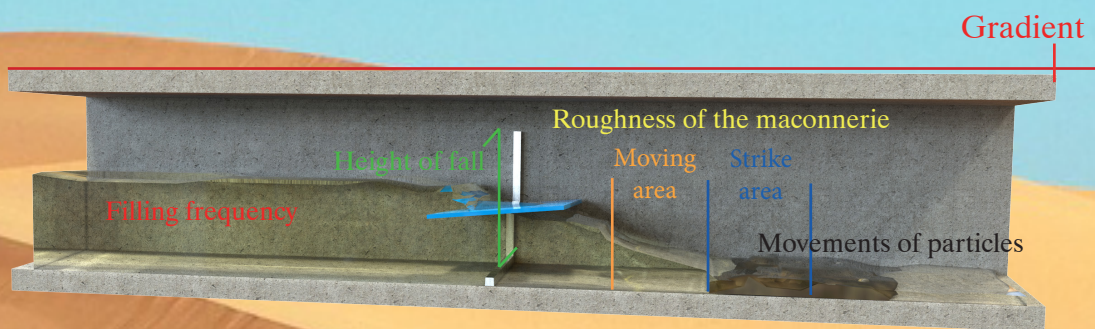




SILTATION MASTERY



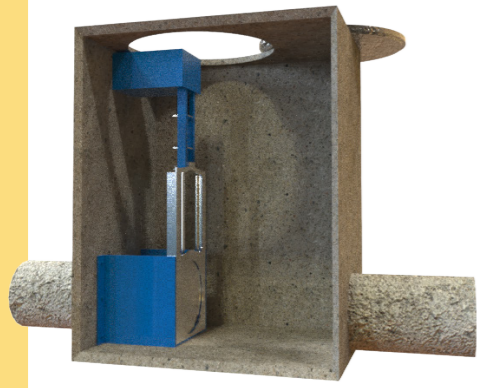
Protect your equipment from silting



The valve stores the effluent passing through the structure, then by the use of hydrostatic and hydrodynamic thrusts it performs a tilting around a horizontal axis with abrupt release of the stored volume.

This opening causes a flush that allows the suspension and displacement of sediments.

Web site : <http://hydrass.eu>
hydrass@orange.fr



1

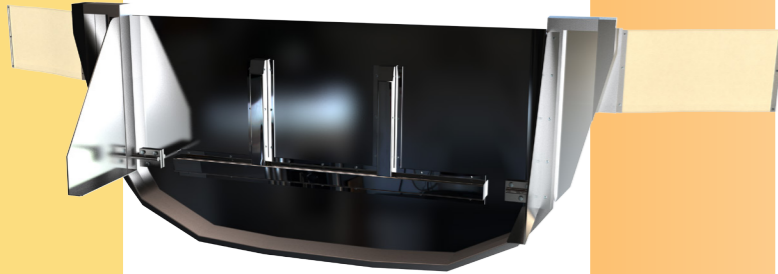
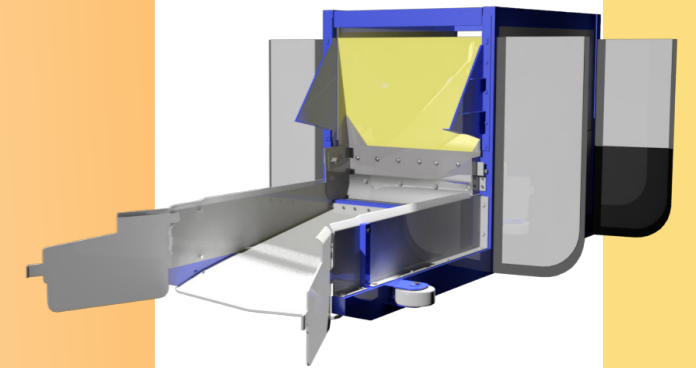
'Agadir' type pendulum valve

The pendulum valve is an equipment that conducts flushes in small section drains

Cleaning robot

Stand-alone scrubbing tool for large section structures

5



2

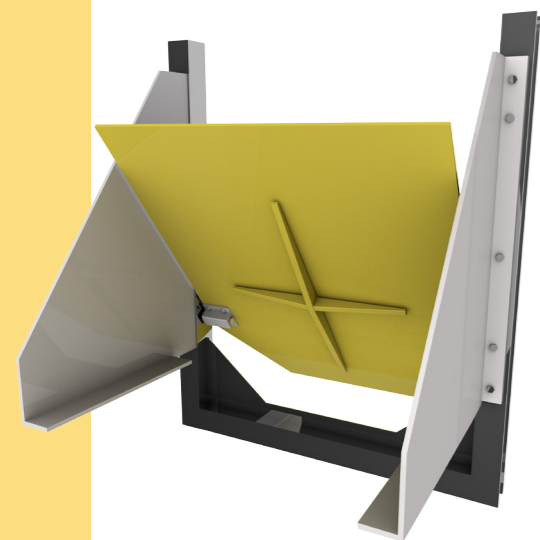
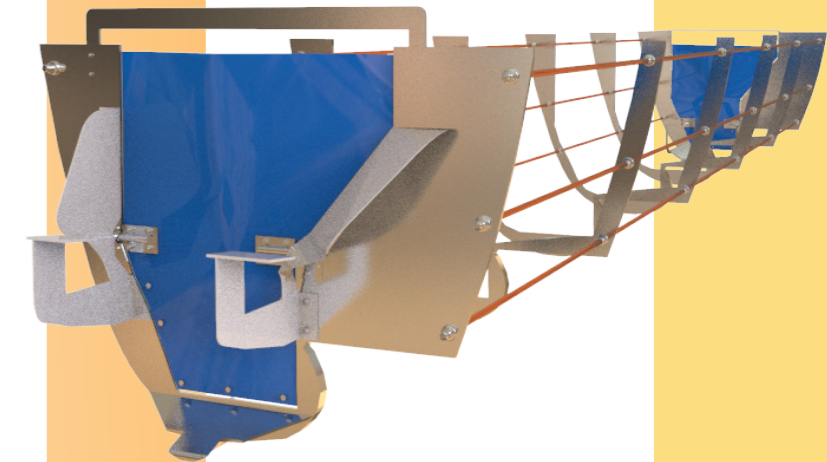
Standard flush valve

The standard flush valve is intended for be placed at the base of a silting. By successive openings the sediments are returned to circulation or pushed into a pit technical

Caterpillar

Mobile cleaning system particularly suitable for low-slope networks

6



3

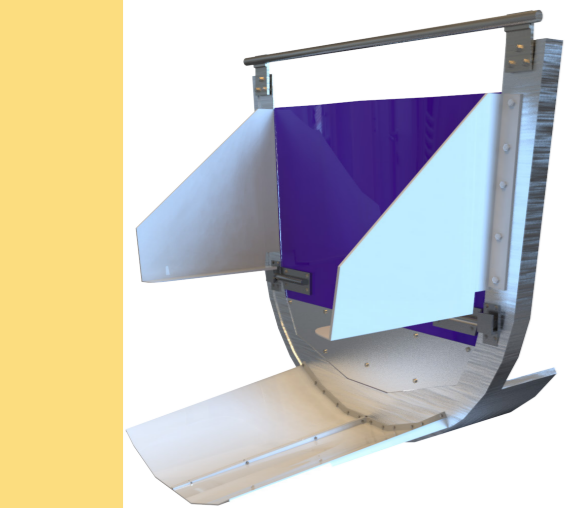
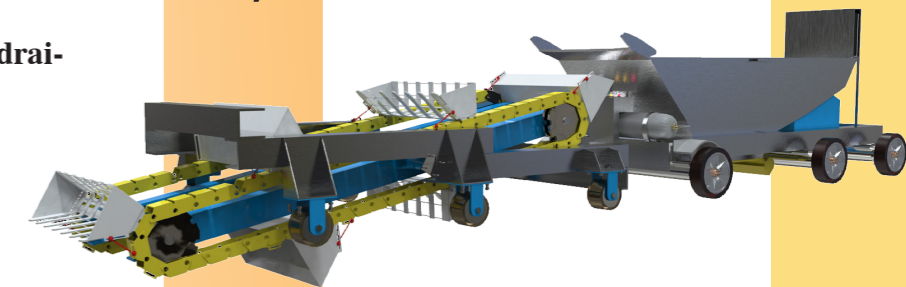
Set of periodic flush valves

The technique consists of placing several valves in a structure in order to carry out a cleaning over a long distance. They operate simultaneously from upstream to downstream

Xerus

Cleaning process for pavement drainage and high water levels

7



4

Mobile flush valve

This valve is intended for uniform systems. It moves over long distances pushed by the effluents by carrying out scrubbing.

Often used in risk areas